

EIT Health Accelerator

A pan-European catalyst for life science innovation.
From labs to patient



Co-funded by the
European Union



Europe's largest healthcare innovation accelerator



Who we are:

As a **Europe** catalyst for healthcare innovation, we connect start-ups with investors, industry leaders, **hospitals** and research institutions to unlock their full potential.



Our mission:

Delivering impact by addressing unmet patient and market needs, while facilitating growth and value creation for innovative **teams and startups**



A uniquely European approach to accelerating impact



From Labs to Patients in Europe

- ✓ Transformative **Public-Private Partnership** associating large variety of players (academic, industry, research center, hospitals ...)
- ✓ **Aligning with European Commission's** strategic objectives
- ✓ Serving as the **single, entry point** for all startups across EIT Health
- ✓ Fostering an **integrative ecosystem** (business, research, education)
- ✓ Responding with **pace and agility** to European crisis (pandemics, wars, natural catastrophies...)



Our Network of Partners

Our vast community connects around 120 leading organisations, exceptional in the worlds of business, education, research and health service delivery, with thousands of start-ups, entrepreneurs and healthcare professionals.

Core partners



Associate partners



EIT Health Leadership board members

6 Management board members
13 Supervisory board members



Jean-Marc
Bourez
CEO

20y in pharma industry - former Sanofi's Director of the eHealth Strategy and Open Innovation Department



Annika Szabo
Portela
Chief
Partnership
Management
officer

PhD in Medical Science – 20 y of international experience in higher education, research and innovation management



Sameena
Conning
Executive
Director of
Corporate
Affairs

Former Biogen's Senior Director, Head, Communications and Public Affairs



Felix Faucon
Chairman
Supervisory
Board (SB)

Health economist – Senior civil servant to the French Ministry of Health



Chad Floe
SB Member

Senior Advisor at TVM Capital Healthcare and deNovo Corporate Advisors



Jaume Ribera
SB Member

Emeritus professor of Operations, Information and Technology at IESE Business School

Key Pillars of a Tailored Approach: Partnership Model



Marc Julien
Senior Accelerator Director
CV: CEO of French Startup:
Diabeloop



Magda Krakowiak
Accelerator Director -
Ventures Sourcing
CV: EU Policy Officer for
Research and Innovation



Isaac Middelmann
Accelerator Director -
Strategic Fundraising
CV: Business Development
& Social Impact Startups



DEAL FLOW
MANAGEMENT



TAILORED
PROGRAMS



MARKET
INTELLIGENCE

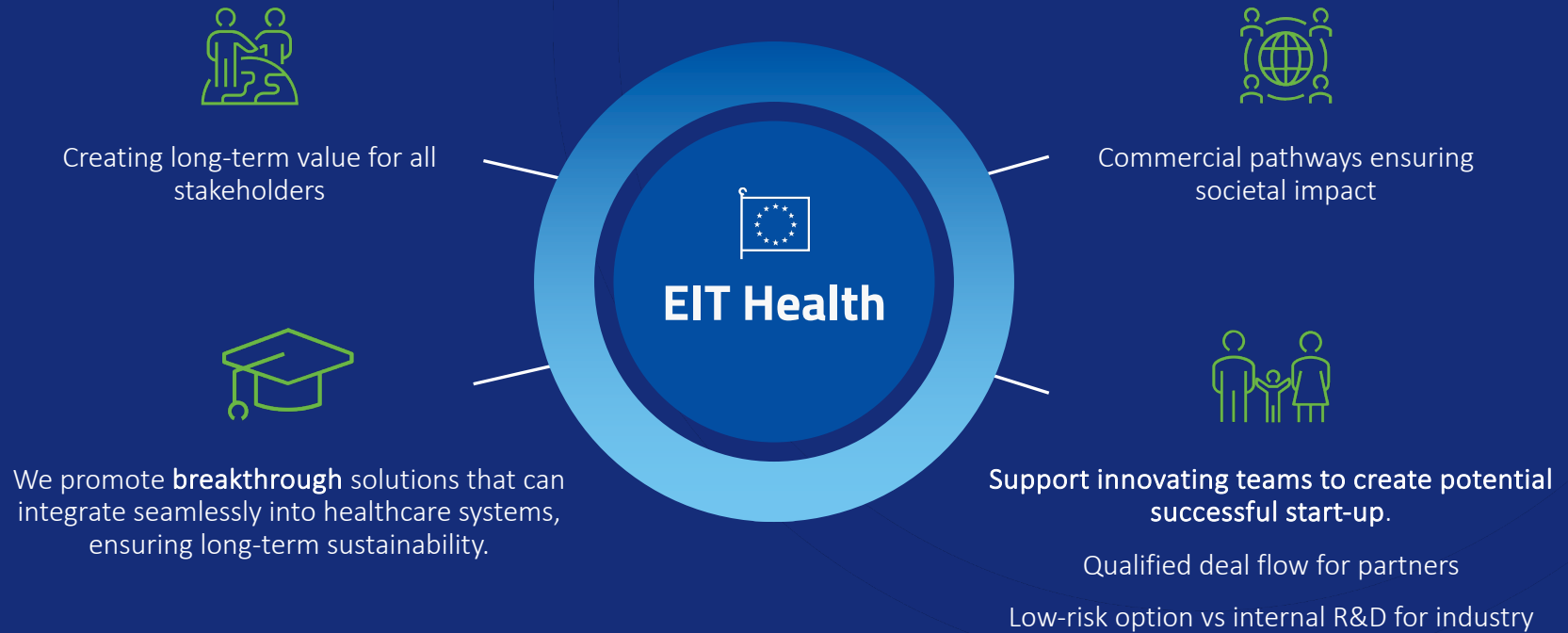


ACCESS TO
FINANCE



STARTUP
GROWTH

A Sustainable Win-Win Model for all stakeholders



Fostering impactful Innovation with more than 2 500 Startups supported

We catalyze significant investment
in solutions that directly address
healthcare challenges



€1.7 billion invested in EIT Health-
supported start-ups

Supported ventures have delivered
real-world solutions impacting
hundreds of thousands of patients.



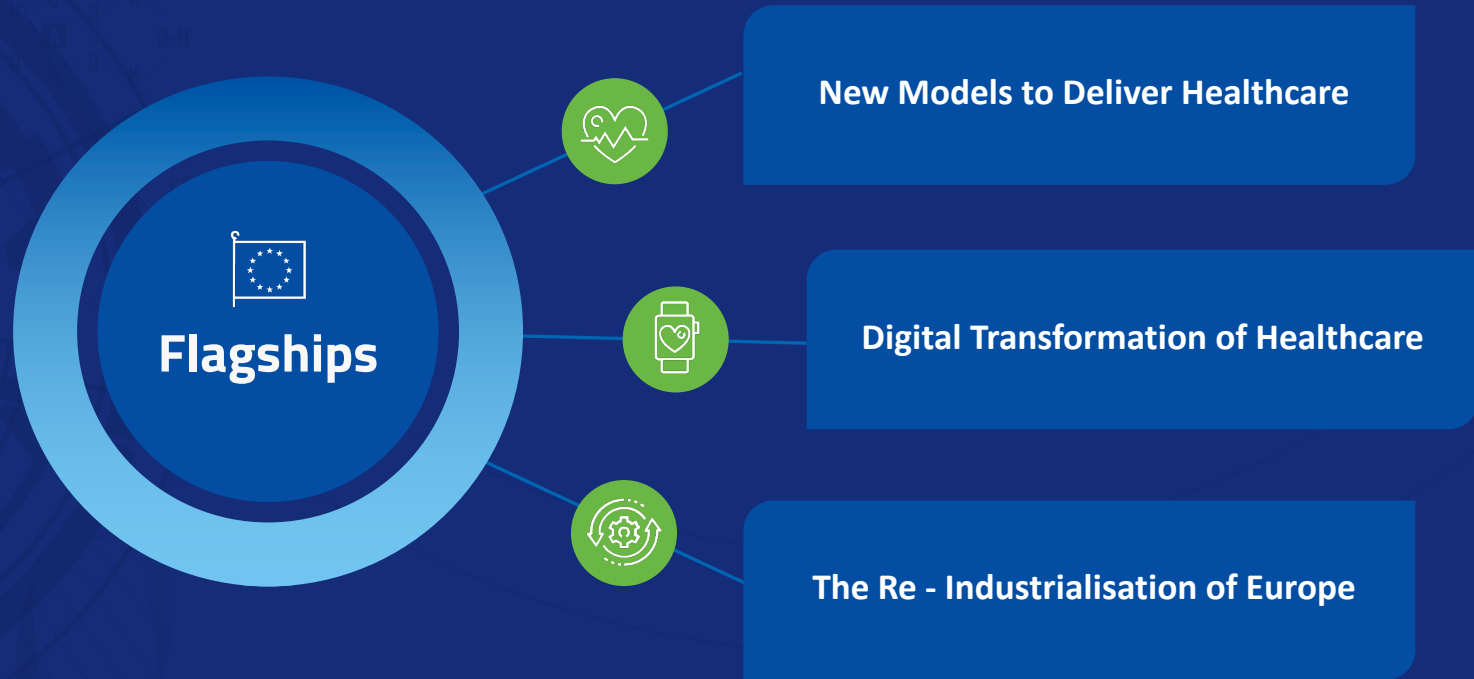
Over 100 healthcare products and
services brought to market

These solutions are improving
healthcare delivery and patient
outcomes in Europe and beyond



365,000 patients and citizens have
benefited from these solutions

To maximise societal impact, our work is strategically focused across flagship initiatives that address underlying drivers of healthcare.



Strategically Positioned for Success: EIT Health's Strong Foothold in Europe

- Strategic partnerships with key European entities



European
Innovation
Council



- External recognition in Europe and beyond



2019 – Top 3
*Most promising
young programme*



2023 – N°1 World
*top public/private
Business Accelerator -*



2023 – VCoE finalist Best
*Incubator/Accelerator/
Equity programme*



2018-23 The 10 most active
*accelerators investment
count in Europe*



2024- Europe's leading
start-up hubs ranking

A **unique**, collaborative approach for a healthier future

1. Harnessing collective strengths for positive societal impact



2. Continuing to drive groundbreaking solutions



3. Uplifting patient outcomes across Europe



4. Accelerating a healthier future for Europe and beyond



Case Study - Venture Centre of Excellence (VCoE) Program co-designed with European Investment Fund

Concept:

- ✓ Provide additional firepower to EU Life Science VCs to allow them to write larger/riskier tickets
- ✓ Provide Corporate/industrial actors with de-risked access to open innovation, investments, M&A opportunities
- ✓ Support European Life Science SMEs to scale and deliver innovation to markets & patients
- ✓ "Tip-to-tail" approach helps startups grow and deliver innovative solutions, while maximizing investor returns.

Impact:

- ◆ Leverages more than € 2bn of investment capabilities from its members, and has supported 122 start-ups to fundraise € 4.1bn in aggregate over 3 years.
- ◆ Truly pan-European programme supporting companies from all regions and subsectors, from pre-seed/seed to Series C and beyond.
- ◆ Members include Sanofi, Google, Institut Merieux and others as well as 16 VC funds such as Jeito, Andera Partners, BGV, Panakes, EIR Ventures...

Case Study - Open innovation Programme: “Seeking Remote monitoring of Inflammatory Bowel Disease patients”

Concept:

- ✓ **KU Leuven hospital** and **Takeda** partner improve IBD monitoring in European and call for innovative technologies, spin-offs, start-ups, SMEs, and consortia, enabling them to present solutions.
- ✓ 10-week programme with sessions leading teams through **business mode validation, adoption, mentoring from IBD experts, investment opportunities.**
- ✓ EIT Health Accelerator team operating and funding the programme.

Impact:

- ◆ Facilitated scale-up for beneficiary companies innovating on a pan-European level to benefit patients
- ◆ Partners and startups will enhance patient outcomes and develop value-based healthcare models.
- ◆ Selected solutions for minimally invasive remote IBD monitoring will reduce testing and visit frequency, improve flare interpretation, and enable proactive patient engagement.

Case Study - Transatlantic Program “Calling2Scale Health 2024”

Concept:

- ✓ Scout and Source neuro/mental health startups & SMEs in both the European and Canadian ecosystems
- ✓ Leverage respective ecosystems to support companies in their transatlantic soft landings
- ✓ Expand impact of EIT Health outside of Europe, as supported by **EIT Global Outreach** initiative
- ✓ **360° Need Assessment**: General pathway & Individualised pathway for selected startups.
- ✓ **Tailor-made approach** to meet clinical, regulatory, market & business, fundraising and talent management needs.

Impact:

- ◆ 2024 pilot phase: 10-12 companies supported, will scale in 2025 and beyond
- ◆ Enabling synergies for matchmaking
- ◆ Special focus on investment landscapes, market mapping, and regulatory / reimbursement support
- ◆ Delivering more solutions to neuro-patients

Latest startup success stories Q2 2024

Startup EIT Health-supported start-up Ochre Bio signs \$1BN+ deal with Boehringer Ingelheim

EIT Health-supported ABLE Human Motion receives CE mark

EIT Health supported startup inHEART secures \$11M to optimise cardiac care

